

# CURAÇAO

banda abou

MAP  
INCLUDED



the secret, unmarked, beloved & rustic

# GALLERY

## NENA SANCHEZ

The vibrant paintings of Nena Sanchez are a familiar sight on walls all across the island. At galleries, in private homes and even at the Hato airport, her bright splashes of hibiscus-red, sea-blue and sunny-yellow draw immediate attention. Yet the best way to absorb the richness of her artwork is to pay a visit to the official Nena Sanchez Gallery at Landhuis Jan Kock.

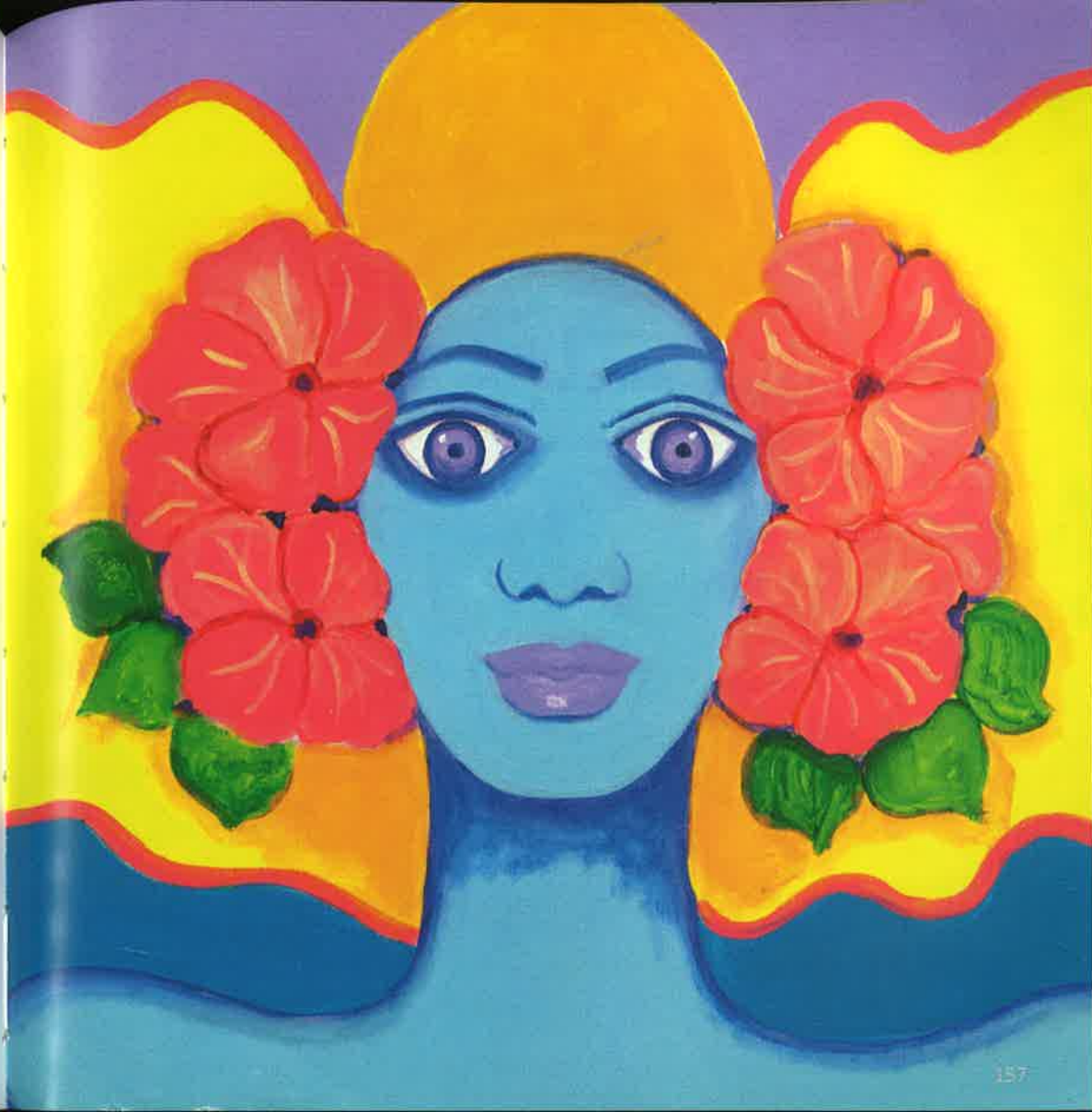
In a former life, Jan Kock was the island's leading salt trade plantation. The estate was run by the cruel and tyrannical owner, Jan Kock himself. Local legend says he occasionally still haunts the grounds. But with the modern-day presence of Nena Sanchez's gallery, the atmosphere at the plantation has changed drastically. These days, Landhuis Jan Kock is a colorful, soothing environment, a place where art and nature can be enjoyed as one. In the outdoor sculpture garden, Sanchez's larger-than-life iguanas peak over stone hedges and her tall goddess figures, with skin the color of the ocean, tower over the cactus trees. The plantation house still offers sweeping views of the nearby salt pans, which now serve as a peaceful sanctuary for pink flamingos.

A Nena Sanchez painting is the ideal Caribbean souvenir, the kind that fills any home with warmth and sunshine. On a dreary day in any other part of the world, even a small piece of her art has the magical ability to transport a viewer directly back to the tropics.

Gallery Nena Sanchez  
Landhuis Jan Kock  
Kaminda San Willibrordus  
Curaçao  
T: +599 9 864 0965  
[www.nenasanchez.com](http://www.nenasanchez.com)

Open:  
Tuesdays-Sundays 10:00 AM - 6:00 PM  
(Mondays closed)

Exceptional:  
The Blue Goddess' in the garden and  
the spectacular view at the Jan Kock salt  
pans.









As of July 2012, Sanchez, a former Miss Curaçao, hosts workshops in her open-air studio. Aspiring artists of all skill levels are invited to come tap into their creative energy.











